



JUL 09 2008

# Kelseya

Newsletter of the Montana Native Plant Society

Kelseya comp. & ill. by Bonnie Heide



Catherine Cain, photo by Bill Cain

## Celebrating Natives

By Debbie Mueller

and design services. Many people think that native gardens are "weedy looking" and can't be attractive or look spectacular. Catherine wants to work with homeowners and landscapers to

The Calypso Chapter of the Montana Native Plant Society finally has boasting rights. Since the departure many years ago of member Annie Greene for Washington State, Calypso has not had a plant nursery it could call its own. That changed this year, when Calypso member and treasurer Catherine Cain opened a retail native plant nursery. Catherine and husband Bill recently moved from their Big Hole riverfront home to this accessible and beautiful high desert location, a true proving ground for drought-tolerant natives. On a recent visit to the nursery, Calypso members were delighted to see that Catherine was nurturing newly planted grapevines and using buried stock tanks for her vegetable beds as a means of conserving water, a scarce commodity in much of southwest Montana.

Catherine buys her plants from reputable wholesalers, ensuring that plants she sells are grown from seed, not wild-collected, and are from established seed sources. Catherine promotes a balanced ecosystem approach using native plants that benefit local native bird and insect populations. Southwest Montana Native Landscapes LLC also offers "plantscape" consultation

and design services. Many people think that native gardens are "weedy looking" and can't be attractive or look spectacular. Catherine wants to work with homeowners and landscapers to eradicate that stigma. In the past there were not many sources offering a variety of native plants, but with the burgeoning interest in natives, greater diversity is now available. Catherine is compiling a color photo notebook of the species she sells in bloom to show customers. She encourages customers to vary the color, the texture, and the sizes of the plants in their plantscape. With enough variety, a native garden will bloom throughout the season and well into the fall. Some forbs can be deadheaded after flowering to promote a fall bloom, while many shrubs offer beautiful spring blooms, interesting summer foliage, and gorgeous fall color. Catherine also recommends surrounding islands of floral display with gravel or bark, which reduces both maintenance and water consumption while providing a focal point in the landscape.

Southwest Montana Native Landscapes LLC also plans to work with area schools, helping students understand how local climate and topography dictate the flora growing in a region. Participating in national educational programs that connect city schools with rural schools through e-mail is one way Catherine hopes to pique the students' interest in their native plants and connect students to their environment. Further

*continued on page 3*

## New Native Plant Manager and Policy From The U.S. Forest Service

By Jackie Cohen with reprint courtesy of Castilleja, Wyoming Native Plant Society

The U.S. Forest Service Region One acquired a Native Plant Program Manager to implement its recently released national directive on native plant materials (Forest Service Manual 2070). With the exception of reforestation policy there was no previous policy for native plant use. Native plants have been identified as key components to combat invasive species and to facilitate wildland restoration efforts.

The major policy points include:

- Native plant materials will be the first choice in revegetation for restoration and rehabilitation of native ecosystems where timely natural regeneration of the native plant community will not occur.
- Under no circumstances will non-native invasive plant species be used as plant material for restoration, rehabilitation or reconstruction of native ecosystems.
- Forest Service staff will use the best information available to choose genetically appropriate native plant materials for the restoration site.
- Non-native, non-invasive plant species may be used when;
  - o Needed in emergency conditions to protect basic resource values,
  - o As an interim, non-persistent measure designed to aid in re-establishing native plants,
  - o When native plant materials are not available,
  - o In permanently altered plant communities.

Susan Rhinehart, a Clark Fork Chapter member, occupies the new position as the Native Plant Program Manager for the U.S. Forest Service Region One. She previously worked with Steve Shelly as the Assistant Regional Botanist in Region One. She says, "I really enjoy working in the program and look forward to working with native plant growers in this region, as well as the MT Native Plant Society, as the Forest Service implements this program." Contact Susan at [srhinehart@fs.fed.us](mailto:srhinehart@fs.fed.us).

## Wildflower Website Award

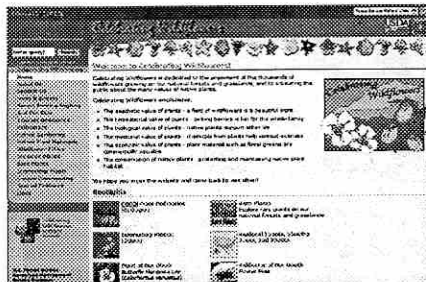
[www.fs.fed.us/wildflowers](http://www.fs.fed.us/wildflowers)

The U.S. Forest Service's "Celebrating Wildflowers" website won the Content Site of the Year 2007 international award. The accolade from Belgium stated:

*"It is with distinct honour and pleasure, we like to announce that you, Celebrating Wildflowers, won our content Site of the Year 2007 award. It is awarded to THE site which content is so good, one absolutely cannot live without. In short the best of the best! And you just jumped out above all other gold winners."*

An additional international award came from Spain, with these comments:

*"Greetings, your website has won the Alcazaren Silver Award. The content, design, and navigation of the Celebrating Wildflowers page have been evaluated with very high scoring. Your description of the many alternatives to enjoy the wildflowers in the USA is very complete, the page design is also very easy to navigate and of top quality. Again, congratulations for your dedication to the website flourishing."*



## Fungi News

The two-year-old electronic journal, Pacific Northwest Fungi, recently changed its name to North American Fungi and expanded its scope. Articles on any aspect of lichenology in North America are welcome.. This journal is peer-reviewed and freely available worldwide at no charge to authors, readers and libraries. One of the benefits of electronic publication is that color photography can be distributed electronically at no charge. The home page is [www.pnwfungi.org](http://www.pnwfungi.org).

## Good Job, Kelseya

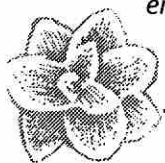
Kelseya exchanges newsletters with scores of other states and Canadian provinces. The Maryland Native Plant Society sent this tribute.

*"To Dave Hanna, Kathy Lloyd, Drake Barton, and the Montana Native Plant Society,*

*We always enjoy receiving and reading Kelseya. You certainly do a fine job with it! We, the Maryland Native Plant Society, have been exchanging newsletters with all the native plant societies and botanical organizations in North America for many years now, and believe it to be an important way to keep in touch with other native plant societies, keep up with what is going on in the native plant world elsewhere, and a source of ideas and inspiration .*

*Thanks for continuing to exchange newsletters with us.*

*Best regards,  
Rod Simmons, Marilandica Editor"*



long-range plans include building a greenhouse and offering even more species for folks to choose from. A website-in-progress should be up and running later this summer. Call 406-498-6198 or email [ecotour@montana.com](mailto:ecotour@montana.com) for nursery days and hours.

Southwest Montana Native Landscapes LLC is easy to find and get to (see sidebar for directions). The vista is classic high desert steppe with sparsely vegetated foothills and gorgeous mountains in the distance. Two friendly black standard poodles, Angus and Alice, may bound out

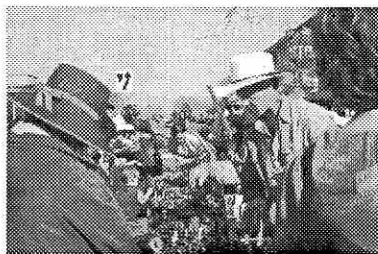
to greet you. But the true sight for sore eyes will be the multitude of containers, ranging from one- to seven-gallon size, filled with native shrubs, groundcover, sages, grasses, and perennial forbs. Over 65 species are available and Catherine also provides sod-forming grass seed. Many of the plants are drought-tolerant once established. Catherine offers a discounted weekly special and encourages folks to access weekly website recommendations related to gardening with natives.

After a lovely evening at Southwest Montana Native

### Visit Southwest Montana Native Landscapes

The drive to SMNL is all paved highway and no dirt roads. From Dillon, head north on Highway 91 North to mile marker 14. From I-15, take the Glen Exit and head south on Highway 91 for eight miles.

Landscapes LLC, Calypso members reluctantly left their tour with the back of the car loaded with containers of healthy, hardy, low-maintenance native plants that maintain our native Montana heritage.



*Clark Fork Chapter members selling plants to an enthusiastic crowd, at Missoula's Farmers Market in May*

## President's Platform



At the end of a fairly cold and dry spring, Memorial Day weekend brought significant rain to most of Montana. On my travels in central Montana over the next two weeks, I saw more rain, swollen creeks and rivers, lots of wildflowers, and green; green grass. It's a refreshing change from the drought much of the state has experienced for the last several years. While we sometimes grow tired of the extremes, our native plants take them in stride. For any given species some years are tough and some are good, with plants employing various strategies to ride out the hard times. After sometimes years of just getting by, the right conditions appear and the plants are ready and waiting to take advantage of them. It's been a treat to see lush growth and all the color in the landscape again. I always find it amazing how hardy and resilient many native species are – sometimes it just feels magic.

So, it's going to be a great summer to get out and enjoy our native plants. Plan to participate in one of the field trips listed in this newsletter, or just get out on your own! I'm looking forward to the annual meeting in Hyalite Canyon at the end of June – lots of activities, native plants, and fun with friends.

I want to welcome Mamie Smith as our new Membership Chair (see article on page 5). Thanks again to our past Membership Chair, Marika Wessner, for all your work on behalf of MNPS!

Have a great summer everyone!

~ Dave Hanna



# EVENTS CALENDAR

Please remember to leave pets at home during MNPS field trips.

## Artemisia chapter

**Lost Water Canyon Research Natural Area, East Pryor Mountain**

**July 26, 9:30 a.m.**

This moderate hike travels over limestone outcrops, so wear sturdy hiking boots. The trip focuses on the condition of the Lost Water Canyon RNA and Forest Service Proposed Wilderness Area. Expect to see wild horses, interesting geology, and to identify flowers and grasses. Assemble at the juncture of Crooked Creek Road and Pryor Mountain Road (the road that comes up from Sage Creek). Driving time from Billings is 2 1/2 hours. We will depart from this road juncture at 9:30 a.m. drive east of Dry Head Vista to a suitable trailhead, hike cross-country to Tony Island Spring, then into the Lost Water Canyon RNA. Bring water, lunch and appropriate mountain clothing. The trip is co-sponsored by the eastern wildlands chapter of the Montana Wilderness Association. Contact Anna Williams, 672-9603 or Clayton McCracken, 252-2807, e-mail [chmc9@bresnan.net](mailto:chmc9@bresnan.net)

## Calypso Chapter

**Pioneer Mountains**

**Saturday, 19 July 2008**

Paul Sawyer plans a full day field trip starting at Elkhorn Hot Springs in the Pioneer Mountains. After a fun day enjoying the beautiful flora of this area, you have the option of soaking in the hot springs. Contact: Kriss Douglass, 782-9060, [samjd@montana.com](mailto:samjd@montana.com), or Debbie Mueller, 782-6651, [lowellave@msn.com](mailto:lowellave@msn.com).

## Clark Fork Chapter

**Shoofly Meadows Research Natural Area**

**Saturday, July 26, 9:00 a.m.**

Join Steve Shelly (U.S. Forest Service Botanist) for a cross-country hike in the Rattlesnake Mountains, northeast of Missoula, to visit the unique habitats of the Shoofly Meadows Research Natural Area (RNA). See some of the most unusual wetland features in Montana, including forests in marshlands where peatlands have encroached into surrounding forests, and an example of a patterned forest. Several rare plants occur in the

RNA, including pod grass (*Scheuchzeria palustris*), poor sedge (*Carex paupercula*), and two carnivorous sundew species. We may also assist the USFS by helping to monitor the condition of the RNA and the rare plant populations. Meet in the northwest corner of the Adams Center parking lot, on the UM Campus, at 9:00 a.m. Bring lunch, water, rain gear, and hiking boots, as well as sandals or other old shoes that you don't mind getting wet. The access road is difficult, so we'll carpool as much as possible. This will be a 3-mile cross-country hike to the wetlands and fens, so we expect to return to Missoula by about 6:00 p.m. LIMITED TO 15. Contact/RSVP: Steve at 329-3041.

**Internat'l Larix Arboretum Tour & Walk**  
**Saturday, October 11, 9:00 a.m.**

Larch Trail in the Coram Experimental Forest. Although this trip occurs in the Flathead, the Clark Fork Chapter sponsors it. Mark your calendar now and details will be in the Fall Kelsey.

## Eastern Montana Chapter

**East Butte in the Sweetgrass Hills**

**Saturday overnight, August 15-16**

Led by ecologist, lyricist and botanical bard Wayne Phillips. In addition to prairie and island range forest vegetation in the sacred Sweetgrass Hills, we'll visit a special cave. We will camp on private ranch property Friday night, Aug. 15, near the trailhead, with water and toilet facilities available. Motel and other accommodations are available in Chester. We will leave the camp at 9 a.m. returning about 3 p.m. Before or after this field trip, Wayne recommends Writing-on-Stone Provincial Park, Alberta as a side trip just north of the border, 26 miles via Whitlash, MT, or 32 km east of Milk River, Alberta (bring your passport). Call or email Wayne Phillips, 453-0608, [mtwayne@gmail.com](mailto:mtwayne@gmail.com) for directions and reservations. This trip is co-sponsored by the Clark Fork chapter, Kelly Chadwick, 243-5082, [kchadwick@mso.umt.edu](mailto:kchadwick@mso.umt.edu).

## Flathead chapter

**Volunteer at the Glacier Nat'l Park Nursery**

Every Tuesday, June 17 to the end of August.

Help with seeding, transplanting, weeding and cleaning, or work on a particular research or experimental project. Bring a sack lunch, your favorite work gloves, and clothes that can tolerate dirt. Meet at the Native Plant Nursery at Glacier National Park. Contact Joyce Lapp at 888-7817 or Sonja Hartmann at 888-7835 for details.

**Tour of Windflower Native Plant Nursery**  
**Saturday, July 19, 10:00 a.m. – noon**

Join owner Terry Divoky, for a tour of this small native plant nursery located three miles south of the entrance to Glacier National Park, near Lake Five. Propagation of some of her plants and plants that work well in dry, damp and wet locations will be discussed. Ask questions about growing your own native plants and see what Terry currently has growing. Time permitting; see a demonstration about seed collection, cleaning and storage. Visit her website prior to your visit for background on the nursery and an idea of what plants you may see: [www.windflowernativeplants.com](http://www.windflowernativeplants.com). Contact: Terry at [tddivoky@centurytel.net](mailto:tddivoky@centurytel.net) or 387-5527.

**Living by Water Workshop and Tour**  
**Sunday, September 28**

Join Patti Mason, Education Director for the Flathead Conservation District, for a tour of restored riparian areas in the lower Flathead area. The workshop will focus on living by the water while maintaining water quality, reducing erosion and protecting water quality. Contact Patti Mason at 752-4220 or visit their website at [www.flathead.cd.org](http://www.flathead.cd.org).

**Glacier Park: Fall Plant Identification and International Birds in Flight**  
**Monday, September 29**

Join Dave Hadden for a rigorous, 5.5 mile hike to Mount Brown lookout in Glacier National Park. Walk through old growth and subalpine forests into alpine plant



communities near the lookout. Each year golden eagles migrate past the lookout by the hundreds. This is a long, rigorous hike, so pack plenty of food, water and clothing suitable for extreme weather. Don't forget binoculars and hiking poles. RSVP to Dave at 837-0783 or paddler@centuritel.net.

## Kelsey Chapter

### Potluck & Planning

**Wednesday, October 1, 5:30 p.m.**

Organizational meeting for the coming year. Bring ideas for programs you'd like to have over the winter and spring. Flathead Chapter is hosting the statewide annual meeting in July 2009, and we'll begin planning now. Meet at the Flathead County Library in Kalispell, in the downstairs meeting room. Contact: Jen Asebrook at 863-6930.

## Maka Flora Chapter

**Sidney: Tour of Kane's Grove, near Sidney**

**Saturday, July 19, 10:00 a.m.**

Kane's Grove is the site of a prehistoric seasonal Native American campsite. In the early 1900s, the grove became a favorite picnic and hiking area for Richland county homesteaders. This trip offers moderate hiking, great geology, and flora and fauna identification. Directions: On highway 16, approaching from Sidney, drive 0.4 miles past 18-mile marker and turn left. On Highway 16, approaching from Culbertson, drive 0.6 miles past the

17-mile marker and turn right. Guide vehicle will be at the gate. A potluck picnic follows the hike. Contact Rita Braun at 488-7872 or rbraun@midrivers.com.

### Plentywood: Brush Lake State Park Clean-up

**Saturday, August 16, 10:00 a.m.**

One of Montana's newest state parks surrounds an ancient glacial lake. We will pick up litter around the perimeter of the lake beginning at 10 a.m. and end with a barbecue and potluck lunch at noon. Maka Flora members will bring canoes. The area hosts swimming and easy hiking. It's a day use area only; no camping allowed. If you are attending from out of the area, call Rebecca Kallevig at 488-5455. A Maka Flora member can meet you at the Medicine Lake café at 9:30 a.m. to show you the route.

### Yellowstone River Float Trip

**Saturday, September 13, 6:00 a.m.**

This beautiful section of the Yellowstone from Intake (near Glendive) to Savage, will take about 10 hours. Meet at the Intake fishing access. Maka Flora members and assorted pirates will camp at Intake on Friday, September 12. Participants must be self-equipped. Contact: Rebecca Kallevig, 488-5455.

## Valley of Flowers Chapter

### Livingston Ranger District Hike

**Saturday, July 19, 9:30 a.m.**

Mill Creek off the Paradise Valley. Meet at the Museum of the Rockies parking lot to carpool. We will travel to the Livingston Ranger District with

our member Marlene Renwick. Bring a lunch, raingear and water for the hike. Contact Joanne Jennings at 586-9585 or jojen@mcn.net.

### South Cottonwood Creek Hike

**Saturday, August 23, 9:00 a.m.**

Join member Peter Husby for a walk up the creek. Meeting at our usual parking lot North of the Ag Building. Bring water, raingear and a snack. Contact Joanne Jennings at 586-9585 or jojen@mcn.net.

## Western Montana

### Hike to Little Spar Lake near Troy

**Saturday, July 26**

Peter Lesica, Montana botanist extraordinaire, leads this hike. Plants range from typical cedar and hemlock habitat types to glacier lilies and ferns. The Little Spar Lake trail is a moderate to strenuous hike on the east side of the Scotchmans, accessed from the Bull Lake area. The length of this hike will depend on spring runoff and trail conditions. Stream crossings can be difficult. Friends of the Scotchman Peaks Wilderness and the Cabinet Resource Group are co-sponsoring this hike. The meeting place and time to be arranged. Contact Sarah Lundstrum, slundstrom@wildmontana.org, or Judy Hutchins, Jhutch7494@aol.com.

## Welcome New Members

The Montana Native Plant Society extends a warm welcome to the following new members as of January, '08.

**Artemesia Chapter:** Cathy Ryerson, David Godfrey

**Clark Fork Chapter:** Susan Reel, Jonathan Carvella, Kavita and Justin Bay, Maureen Hartmann

**Calypso Chapter:** Steve and Bridget Parker, Marilyn Rich, Ed and Tina Walter, Verna Macpherson, Kelly Upright, Delena and Roger Norris-Tull, Joyce Conners, Linda Lyon

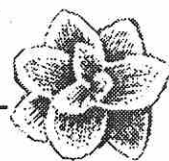
**Flathead Chapter:** Bernadette and Donna Wilson, Joan Schmidt, Kimberly Pinter

**Valley of Flowers Chapter:** Margaret Bach and Elizabeth Steel from Pennsylvania.

Your participation and support are crucial. Please contact your chapter representative, listed on the last page of this newsletter, with ideas, suggestions and questions.

## New Membership Chair

A hearty welcome and thanks to **Mamie Colburn**, who assumes all the duties as membership chair which include managing the membership database, tracking new membership and renewals, and much more. Mamie lives in Missoula with her husband, Kevin. She enjoys hiking, paddling and spending time with her dog, Lucky. She has a Master of Science degree from the University of Idaho, where she completed her thesis on the habitat of Spalding's catchfly (*Silene spaldingii*). She currently works for the city of Missoula as an Air Quality specialist.



## New Category Added to Montana Noxious Weed List

by Kathy Lloyd

As lovers of Montana's native flora, most of us are concerned about noxious weeds, those invasive, alien plants that displace native species, changing the composition and function of landscapes in the process. MNPS members should be aware of several changes to the Montana Noxious Weed List that were published on March 27, 2008. Montana's noxious weed list is now comprised of four categories. **Category 4** is new and can be described as the "Watch List." Category 4 plant species are plants that are invasive and may cause significant economic or environmental impacts if allowed to become established in Montana. Research and monitoring for Category 4 plant species may result in future listing as a Category 1, 2, or 3 noxious weed in the state. Plant species designated as a Category 4 plant are prohibited from sale in or into Montana. Scotch broom (*Cytisus scoparius*) is the only plant currently listed as a Category 4 noxious weed. The intent of Category 4 listings is to prohibit nursery trade for plants that are invasive and may cause significant economic or environmental impacts if allowed to become established in Montana.

**Category 1** noxious weeds are weeds that are currently established and generally widespread in many counties in the state. Examples include Canada thistle (*Cirsium arvense*), leafy spurge (*Euphorbia esula*), and spotted knapweed (*Centaurea maculosa*). **Category 2** noxious weeds are weeds that have recently been introduced into the state or are rapidly spreading. Examples include tall buttercup (*Ranunculus acris*), perennial pepperweed (*Lepidium latifolium*), and tamarisk (*Tamarix* spp.). **Category 3** noxious weeds have not been detected in the state or may be found only in small, localized infestations. Examples include yellow starthistle (*Centaurea solstitialis*), Eurasian watermilfoil (*Myriophyllum spicatum*), and common crupina (*Crupina vulgaris*).

Other changes to the Montana Noxious Weed List include the following category shifts:

- Dyer's woad (*Isatis tinctoria*) Category 2 to Category 3
- Rush skeletonweed (*Chondrilla juncea*) Category 3 to Category 2
- Yellowflag iris (*Iris pseudacorus*) Category 3 to Category 2

The following are new additions to the weed list:

- Hoary alyssum (*Berteroa incana*) Category 1
- Flowering rush (*Butomus umbellatus*) Category 3
- Blueweed (*Echium vulgare*) Category 2
- Japanese knotweed (*Polygonum cuspidatum*, *sachalinense*, & *polystachyum*) Category 3

For more information or to download the Montana Noxious Weed List, visit [www.agr.mt.gov/](http://www.agr.mt.gov/) and click on Weeds & Pests.



Scotch Broom (*Cytisus scoparius*)

## Publications & Guides

### Free from MNPS Publications:

- MNPS membership brochures
- Plant Collection Guidelines for Teachers brochures
- Echinacea Cultivation Information
- Plants Collected in Montana During the Lewis & Clark Expedition. Please send a SASE to 1270 Lower Sweet Grass Road, Big Timber, MT 59011 to request any of these publications.

### From the Flathead Chapter:

Gardening with Flathead Valley native plants (packet). Cost: \$3.50. Contact Tara Carolin at 334 North Many Lakes Drive, Kalispell, MT 59901.

### From the Kelsey Chapter:

Landscaping with natives in the Helena area (packet). Cost: \$3.50. Contact Kathy at 449-6586 or e-mail: [drakekath@hughes.net](mailto:drakekath@hughes.net) to order.

### From the Valley of Flowers Chapter:

Landscaping with natives in the Bozeman, Livingston, and Big Timber areas (booklet). Cost: \$6.50. Contact Denise Montgomery at 586-0156 or e-mail: [nmontgomery@montanadsl.net](mailto:nmontgomery@montanadsl.net) to order.

### Available online:

Guidelines for Selecting Horticultural Plant Material for Montana (voluntary guidelines by MNPS and the Montana Nursery and Landscape Association)

Lewis & Clark Plants Collected Elsewhere That Occur in Montana, an inclusive list of Lewis & Clark plants found in the state. Visit the MNPS website at [www.umt.edu/mnps](http://www.umt.edu/mnps) to download in pdf format.



## MNPS Chapters & the Areas They Serve

ARTEMISIA CHAPTER - Yellowstone and Carbon Counties; southeastern/south-central Montana

CALYPSO CHAPTER - Beaverhead, Madison, Deer Lodge, and Silver Bow Counties; southwestern Montana

CLARK FORK CHAPTER - Lake, Mineral, Missoula, Powell, and Ravalli Counties

FLATHEAD CHAPTER - Flathead and Lake Counties plus Glacier National Park

KELSEY CHAPTER - Lewis & Clark, Jefferson, and Broadwater Counties

MAKA FLORA CHAPTER - Richland, Roosevelt, McCone, Sheridan, and Daniels Counties

VALLEY OF FLOWERS CHAPTER - Gallatin, Park, and Sweet Grass Counties plus Yellowstone National Park

All MNPS chapters welcome members from areas other than those indicated. We've listed counties just to give you some idea of what part of the state is served by each chapter. Watch for meeting announcements in your local newspaper. Ten paid members are required for a chapter to be eligible for acceptance in MNPS.

Your mailing label tells you the following:

CHAPTER AFFILIATION: ART=Artemisia; CAL=Calypso; CF=Clark Fork; F=Flathead; K=Kelsey; MF= Maka Flora; VOF=Valley of Flowers

YEAR YOUR MEMBERSHIP EXPIRES: Memberships expire in February of the year listed on your mailing label.

Use this form to renew your membership TODAY! Please drop us a note if any information on your label is incorrect. **Please notify us promptly of address changes.**

Membership in Montana Native Plant Society is on a calendar-year basis, March 1 through the end of February of the following year. New-member applications processed before the end of October each year will expire the following February; those processed after November 1 will expire in February of the year after. Membership renewal notices are mailed to each member in January. Please renew your membership before the summer issue of Kelseya so your name is not dropped from our mailing list. Your continued support is crucial to the conservation of native plants in Montana. THANK YOU!

---

## MONTANA NATIVE PLANT SOCIETY MEMBERSHIP

Name (please print) \_\_\_\_\_ E-mail \_\_\_\_\_

Address \_\_\_\_\_ City/State/Zip \_\_\_\_\_

Phone \_\_\_\_\_

☐

New Membership

☐

Renewal

If you wish to be affiliated with a chapter (see above), list it here \_\_\_\_\_

Membership Level	Dues w/affiliation	Dues w/o affiliation
Individual	\$20	\$15
Family	\$25	\$20
Business/Organization	\$40	\$35
Living Lightly	\$15	\$15
Lifetime (one-time pymt)	\$300 per household	-----

MAKE CHECKS PAYABLE TO:  
Montana Native Plant Society  
P.O. Box 8783  
Missoula, MT 59807-8783

*Canadian subscribers please add \$4.00 to cover mailing costs. Additional donations may be specified for a particular project or the general fund.*



## About Montana Native Plant Society

The Montana Native Plant Society (MNPS) is a 501(c)(3) not-for-profit corporation chartered for the purpose of preserving, conserving, and studying the native plants and plant communities of Montana, and educating the public about the value of our native flora. Contributions to MNPS are tax deductible, and may be designated for a specific project or chapter, for the Small Grants fund, or the general operating fund.

Your yearly membership fee includes a subscription to *Kelsey*, the quarterly newsletter of MNPS. We welcome your articles, field trip reports, book review, or anything that relates to native plants or the Society. Please include a line or two of "bio" information with each article. Drawings should be in black ink or a good quality photocopy. All items should be typed, saved in Microsoft Word or rich text format (rtf) for a PC, and sent electronically to: jcohen@bigsky.net or mailed to Kelsey Editor, 10350 Lakewood Place, Lolo, MT 59847.

Changes of address, inquiries about membership, and general correspondence should be sent to MNPS Membership, P.O. Box 8783, Missoula, MT 59807-8783.

Advertising space is available in each issue at \$5/column inch. Ads must be camera-ready and must meet the guidelines set by the Board of Directors for suitable subject matter; that is, be related in some way to native plants or the interests of MNPS members.

The deadline for each issue is Fall--September 10; Winter--December 10; Spring--March 10; Summer--June 10. Please send web items to our webmaster concurrent with these dates.

If you want extra copies of *Kelsey* for friends or family, call the Newsletter Editor, write to the above address, or email: jcohen@bigsky.net.

No part of this publication may be reprinted without the consent of MNPS. Reprint requests should be directed to the Newsletter Editor.

Visit our website at: [www.umn.edu/mnps/](http://www.umn.edu/mnps/) or contact our webmaster Marilyn Marler at: [marler@bigsky.net](mailto:marler@bigsky.net)

## MNPS Board of Directors

President	Dave Hanna	Choteau	466-3661
Past-President	Susan Winslow	Bridger	668-9112
Vice President	Karen Shelly	Missoula	542-0620
Secretary	Patrick Plantenberg	Townsend	266-5265
Treasurer	Madeline Mazurski	Missoula	542-0262
Newsletter Editor	Jackie Cohen	Lolo	273-3104

### Directors At-Large

Eastern Montana	Wayne Phillips	Great Falls	453-0648
Western Montana	Judy Hutchins	Heron	847-2717

### Chapter Representatives

Artemisia Chapter	Leslie Marty	Bridger	445-9178
Calypso Chapter	Sheila Thompson	Deer Lodge	846-1855
Clark Fork Chapter	Mike Young	Missoula	721-7615
Flathead Chapter	Betty Kuropat	Columbia Falls	892-0129
Kelsey Chapter	Kathy Lloyd	Helena	449-6586
Maka Flora Chapter	Rebecca Kallevig	Sidney	488-5455
Valley of Flowers Chapter	Joanne Jennings	Bozeman	486-9585

### Standing Committees

Conservation	Peter Lesica	Missoula	728-8740
Landscaping/Reveg	Kathy Settevendemie	Bonner	244-5800
Small Grants	Cathie Jean	Ennis	599-9614
Membership	Mamie Colburn	Missoula	543-1802

Moving? Please let us know! MNPS Membership, P.O. Box 8783, Missoula, MT 59807-8783

## Montana Native Plant Society

Kelsey Editor  
10350 Lakewood Pl.  
Lolo, MT 59847

CHANGE SERVICE REQUESTED

© Copyright 2008  
Montana Native Plant Society  
Printed on recycled paper

PRSRT STD  
US POSTAGE  
PAID  
Plains, MT  
59859  
PERMIT NO. 3

MONTANA STATE LIBRARY  
ATTN: ACQUISITIONS  
1515 E 6TH AV  
HELENA MT 59620

XCHG XCHG